

**NAVIGATION CABINET**

 Model: UPS-RACK
 

---


**FEATURES**


---

- Combines energy requirements for all Navi and Avi components.
- Robust, single point of control and monitoring through an Ethernet connection.
- Up to 96H battery backup
- Multiple OVP protection

**SPECIFICATIONS**


---

**Mechanical**


---

Weight	210 kg (excluding batteries) 600 kg (max. with 6 batteries)
Dimension (W x D x H)	605 mm x 503 mm x 1851 mm (Excluding eyebolt, and front door) 605 mm x 566 mm x 1904 mm (Including eyebolt, and LOTO switch)
Enclosure Materials	Anodized and powder-coated Steel
Lifting	4X M12

**Electrical**


---

Supply Voltage	230 VAC
Operating Power	24 VDC
Battery capacity	600Ah at 24V
Battery type	Valve Regulated Lead Acid (VRLA) Absorbent Glassmat Technology (AGM)

**Others**


---

Battery backup duration	Up to 96h for AVI and NAVI scopes
Operating temperature	-40°C to 55°C (-40°F to 131°F)
Color	RAL7035

**Option**


---

Smoke detector	Different model available
----------------	---------------------------

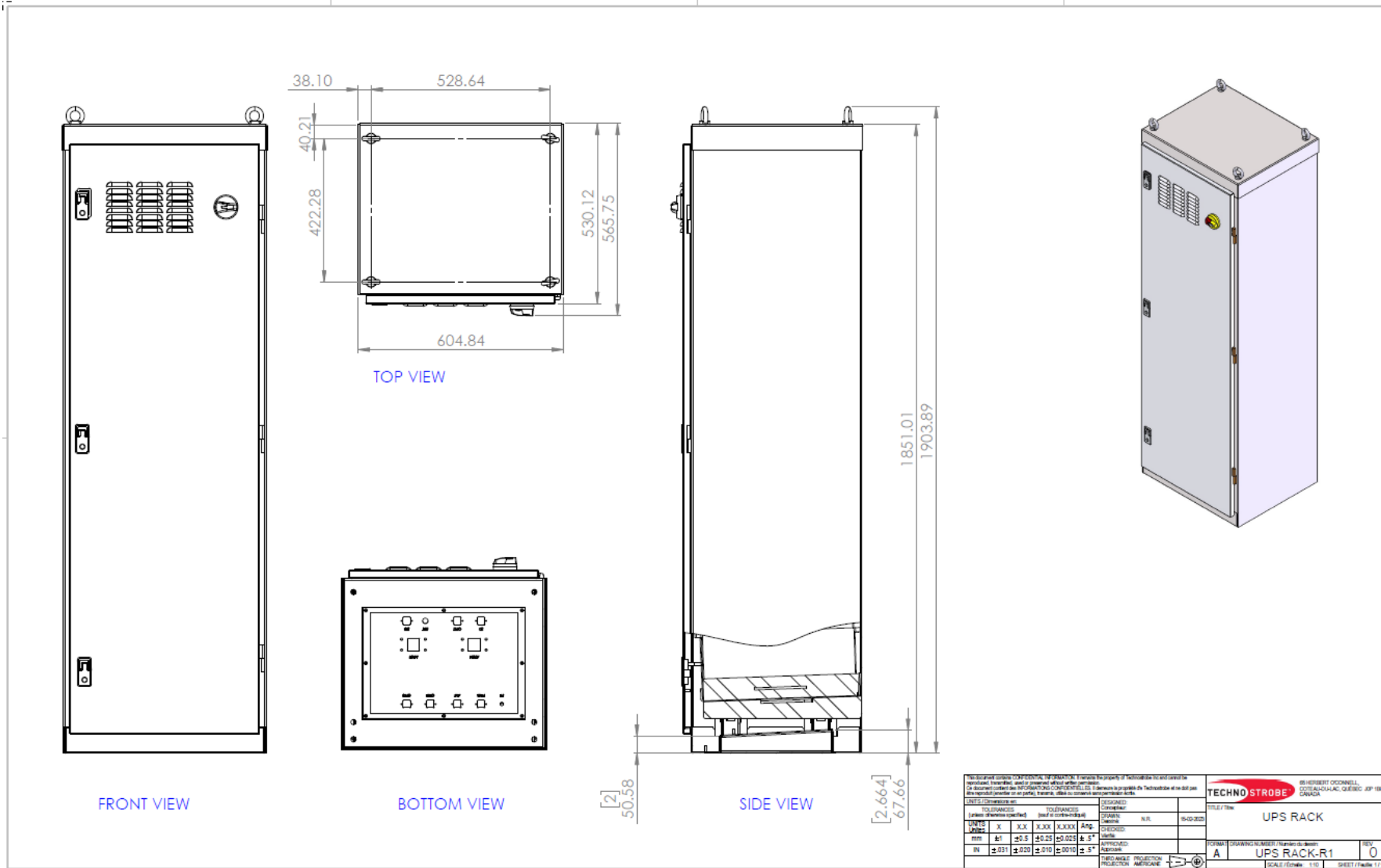
**COMPLIANCES**

- IEC/EN 61000-6-4
- EN 60364
- EN ISO 12100
- IP54
- UL508A
- RoHS

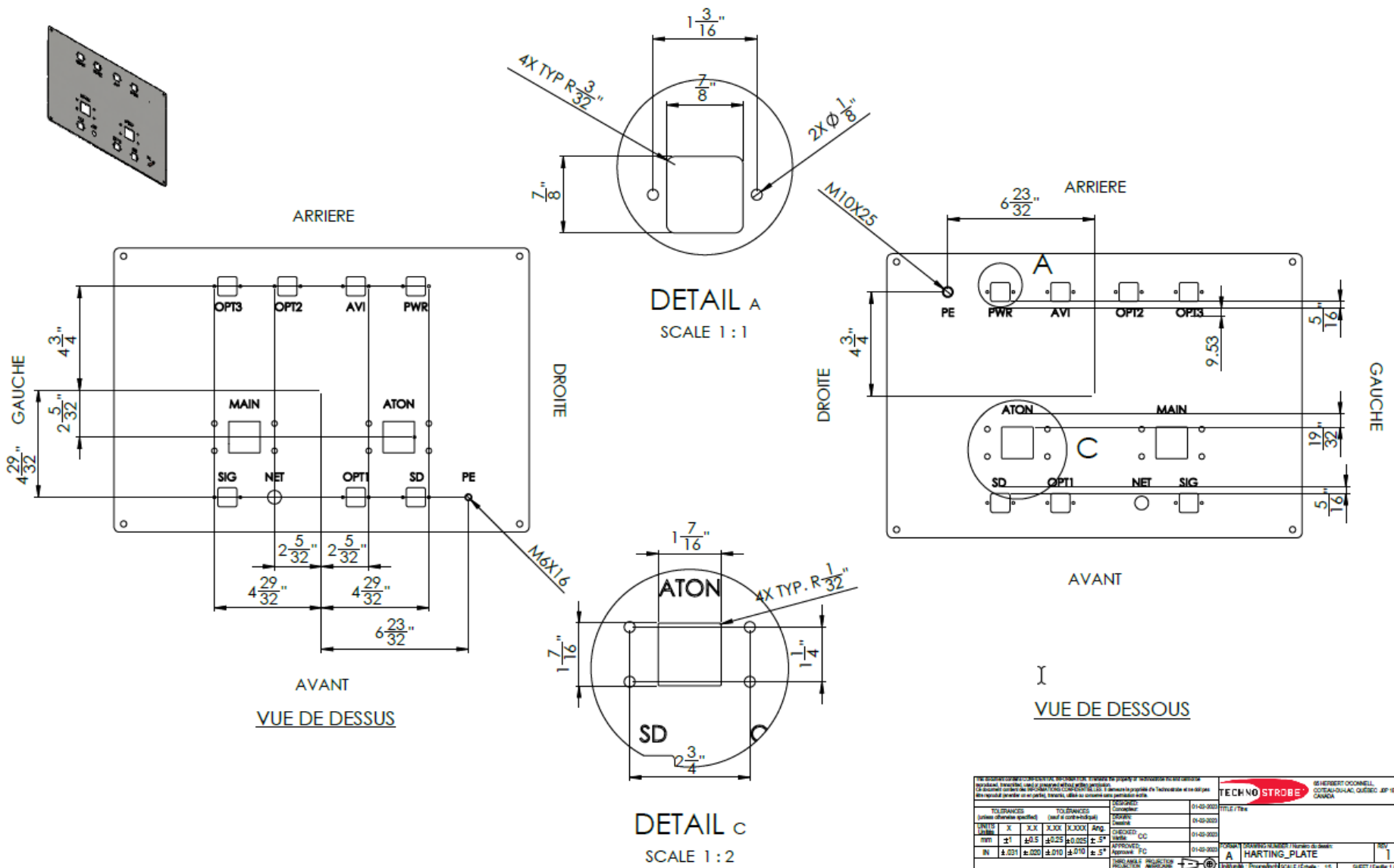
**Residual risk**

Electric incident:

- Ensure that the power is completely turned off before any manipulation.
- Ensure to wear all the personnel protective equipment necessary.



<small>                 This document contains TECHNOSTROBE™ information. It remains the property of Technostrobe Inc and cannot be reproduced, transmitted, and/or copied without written permission. Toute information contenue dans ce document est propriété de Technostrobe et ne doit pas être divulguée, transmise, ni copiée sans la permission écrite de Technostrobe.             </small>				<b>TECHNO STROBE</b>		<small>                 25 HERBERT O'CONNELL                  COTEAU-DU-LAC, QUÉBEC J0P 1B0                  CANADA             </small>	
UNITS / UNITÉS: mm / mm				DESIGNED / CONÇU:		FILE / FICHIER:	
TOLERANCES:				FINISHED / FINI:		UPS RACK	
FRAISE / FRAISAGE: ±0.10 / ±0.25 / ±0.025 / ±0.010				SURFACE / FINITION:		FORM:	
TURN / TOURNE: ±0.05 / ±0.10 / ±0.025 / ±0.010				DRILLING / PERÇAGE:		A UPS RACK-R1	
HOLE / TRAVÉ: ±0.05 / ±0.10 / ±0.025 / ±0.010				PROJECTION / PROJECTION:		SCALE / ÉCHELLE: 1:10	
HOLE / TRAVÉ: ±0.05 / ±0.10 / ±0.025 / ±0.010				PROJECTION / PROJECTION:		SHEET / FEUILLE: 1/1	



TOUVERIES (systeme obtenu spécifié) X X X X X X X X X X mm ±1 ±0.5 ±0.25 ±0.025 ±.5° IN ±.021 ±.000 ±.010 ±.010 ±.5°		TOUVERIES (not a contract spec) CHECKED: CC APPROVED: FC INCHES/MILLIMETERS REVISIONS		01-01-2020 01-01-2020 01-01-2020 01-01-2020 01-01-2020	
TITRE / Title <b>A HARTING_PLATE</b>			65 HERBERT O'CONNELL COTEAU-DU-LAC, QUEBEC J0P 1B0 CANADA		
FORMATS: DRAWING / DRAWING / Format / Size A HARTING_PLATE			REV 1		